

**GAMMA<sup>®</sup> SERIES** | **L PANEL CONSTRUCTION**



**GAMMA<sup>™</sup>**  
**IMPACTTOUGH**  
**REINFORCED SUBSTRATE**  
**SIMPLY THE BEST AVAILABLE MID-PRICE**  
**RANGE OPERABLE WALL**

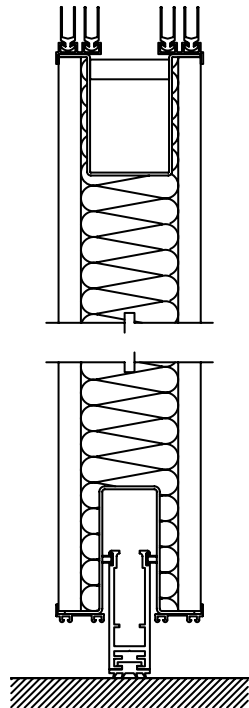
- SUPERIOR SOUND STOPPING ABILITY
- GREATER STRENGTH AND DURABILITY
- DISCREET AND EFFECTIVE PROTECTIVE EDGE TRIM  
 Saves the otherwise vulnerable exposed finish on corners of “wrap-around” and “trimless” designs.

**MANUAL OPERATION.**

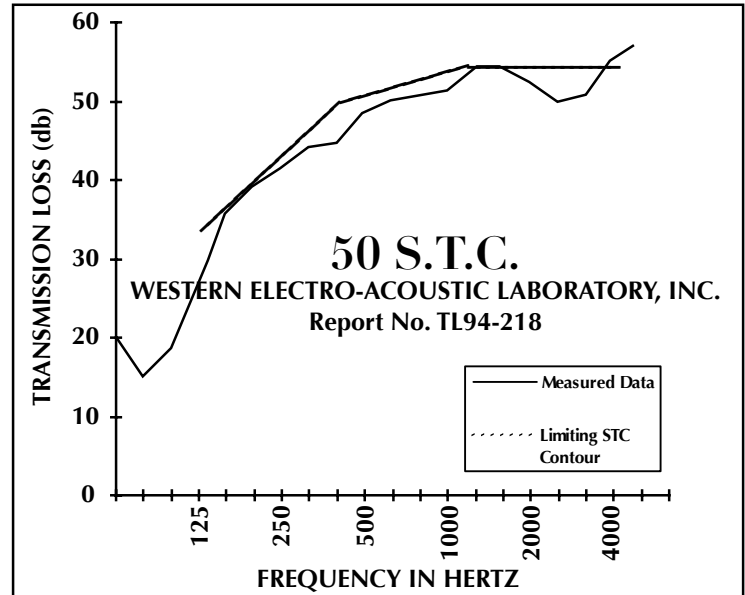
**PANEL HEIGHT: 16' max.**

**PANEL WIDTH: 48" max. but do not exceed width of finish fabric**

**PANEL WEIGHT: 6.7 pounds per square foot.**



**39 N.I.C.**  
 GUARANTEED WHEN SPECIFIED  
 TESTED IN ACCORDANCE WITH ASTM E336



**SPECIFICATIONS**

**PANEL CONSTRUCTION:** Acoustical panel, approx. 4" thick, shall have rigid faces. Core shall be fibrous glass sound attenuating material. Frame members shall be roll formed steel, 16 gauge vertical and 14 gauge horizontal top rail. Steel frame members shall encapsulate face sheets and provide protective edge feature. Tongue and groove vertical intersections shall incorporate multi-fin acoustical gaskets. No fasteners shall be visible on panel face when wall is in extended position. Frame members shall have paint finish (bronze and silver as standard colors with optional powder-coat available).

**TEST DATA:** Sound transmission class (S.T.C.) 50 when tested in accordance with ASTM E90-90 in NSA accredited independent laboratory.

