

**GAMMA<sup>®</sup> SERIES | H PANEL CONSTRUCTION**



**GAMMA<sup>™</sup>  
FULL HEIGHT FIBERBOARD  
TACKABLE SUBSTRATE**

**SIMPLY THE BEST AVAILABLE MID-PRICE  
RANGE OPERABLE WALL**

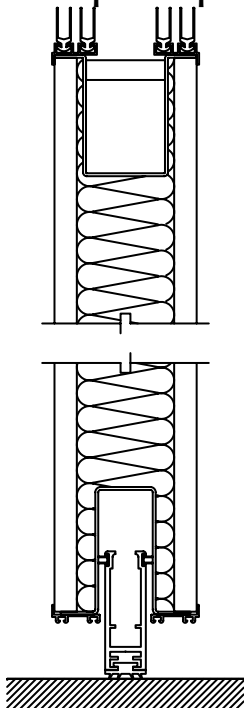
- **SUPERIOR SOUND STOPPING ABILITY**
- **GREATER STRENGTH AND DURABILITY**
- **DISCREET AND EFFECTIVE PROTECTIVE  
EDGE TRIM**  
Saves the otherwise vulnerable exposed finish on  
corners of "wrap-around" and "trimless" designs.

**MANUAL OPERATION.**

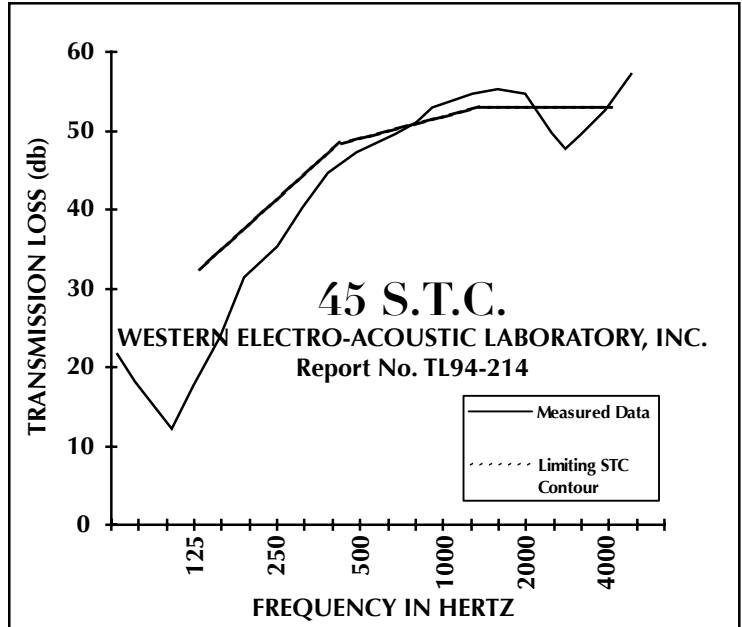
**PANEL HEIGHT: 16' max.**

**PANEL WIDTH: 48" max. but do not exceed width of  
finish fabric**

**PANEL WEIGHT: 6.5 pounds per square foot.**



**37 N.I.C.**  
GUARANTEED WHEN SPECIFIED  
TESTED IN ACCORDANCE WITH ASTM E336



**SPECIFICATIONS**

**PANEL CONSTRUCTION:** Acoustical panel, approx. 4" thick, shall have 1/2" thick tackable medium density fiberboard (full surface tackboard) laminated to 1/2" rigid backer board. Core shall be fibrous glass sound attenuating material. Frame members shall be roll formed steel, 16 gauge vertical and 14 gauge horizontal top rail. Steel frame members shall encapsulate face sheets and provide a protective edge feature. Tongue and groove vertical intersections shall incorporate multi-fin acoustical gaskets. No fasteners shall be visible on panel face when wall is in extended position. Frame members shall have paint finish (bronze and silver as standard colors with optional powder-coat available).

**TEST DATA:** Sound transmission class (S.T.C.) 45 when tested in accordance with ASTM E90-90 in NSA accredited independent laboratory.

(detail shows protective vertical edge trim)

