

# DIGIT 6 - PANEL CONSTRUCTION

## ALPHA<sup>®</sup> SERIES | X PANEL CONSTRUCTION



### ALPHA ALL WELDED ALL STEEL FIRE-RATED U.L. ONE HOUR

- CONFIGURATION OF OPERABLE WALLS, END DETAILS, AND TRACKS MUST BE COMPATIBLE WITH PREVIOUSLY TESTED SPECIMENS. CONTACT ADVANCED EQUIPMENT OFFICE FOR PARTICULARS AND EXAMPLES.
- FINISH MATERIALS USED TO COVER FIRE RATED PANELS MUST ALSO HAVE BEEN TESTED AND APPROVED BY U.L. ADVANCED EQUIPMENT STANDARD VINYL AND CARPET QUALIFY. CONSULT FACTORY ABOUT OTHERS.

MANUAL OPERATION.

PANEL HEIGHT: 40' max.

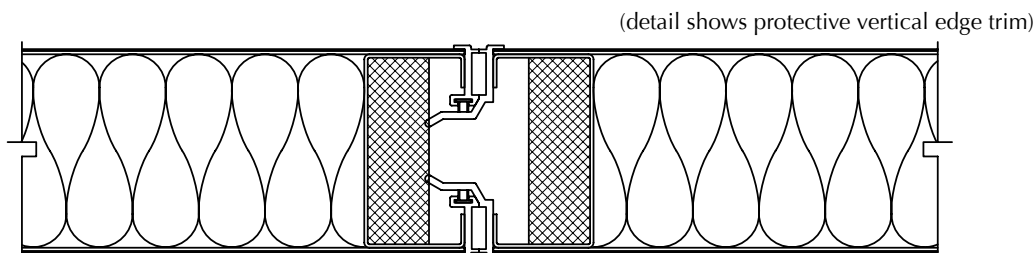
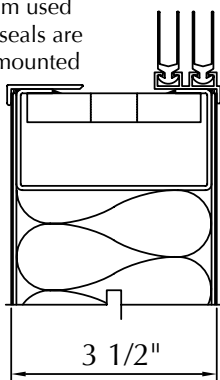
PANEL WIDTH: 48" normal, 52" max. but do not exceed width of finish fabric.

PANEL WEIGHT: 10 pounds per square foot.

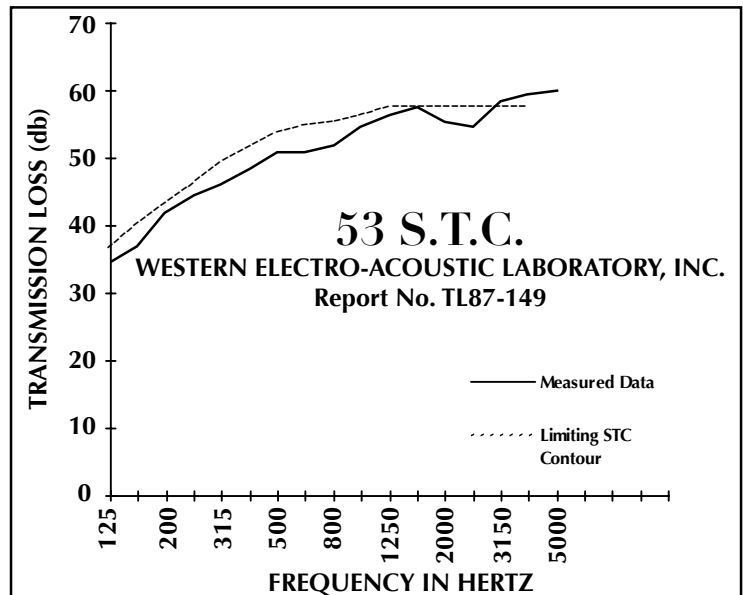
#### SPECIFICATIONS

**PANEL CONSTRUCTION:** Acoustical panel, approx. 3 1/2" thick, 1HR fire-rated, with 16 gauge steel faces fusion welded 8" o.c. (max.) to 16 gauge steel channel perimeter frame with 14 gauge top rail. Panel faces internally stiffened by welded steel members. Core shall be fire rated fibrous glass sound attenuating material. Panel weight shall be approximately 8.5 psf. Panel perimeter trim of approximately 1/8" thick aluminum alloy shall incorporate protective edge feature and form tongue and groove vertical intersections having incombustible acoustic gaskets. Optional trim allowing finish to wrap around edge.

cap trim used when seals are track mounted



**40 N.I.C.**  
GUARANTEED WHEN SPECIFIED  
TESTED IN ACCORDANCE WITH ASTM E336



**FIRE RATING:** With shop drawing submittal, provide U.L. (Underwriters Laboratories Inc.) issued card showing Registration Number and one hour rating applicable to submitted product. On completion of manufacture, provide Architect and Owner with U.L. Certificate showing operable walls provided are the same as tested per U.L. 10B and are as registered with underwriters Laboratories with rating of "one hour".

**TEST DATA:** U.L. issued card with Registration Number and one-hour rating applicable to product is provided with submittals. Upon completion of installing, a U.L. Certificate is provided showing operable walls are the same as tested per U.L. 10B and are registered with Underwriter's Laboratories with a rating of "one hour". Sound transmission class (S.T.C.) 53 when tested in accordance with ASTM E90-85 in NVLAP independent laboratory. Trolley plate anchorage in panel top rail withstands a 10,000-pound minimum tensile load applied via pendant bolt. When tested in accordance with ASTM E-72, a 23'x4' panel resists a uniform load of 20 pounds per square foot applied normal to the panel face without damage.